

YEAR

2013

LINK

MAGAZINE GAP RD (from GARDEN RD to PEAK RD)

COVERAGE (B) STATION

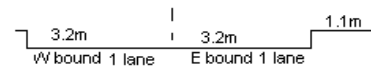
2205

ROAD NETWORK

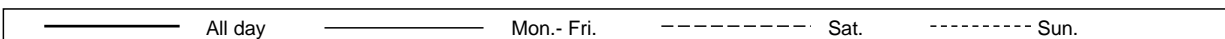
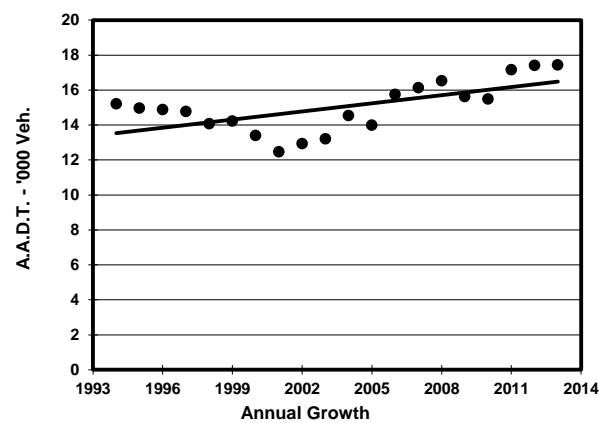
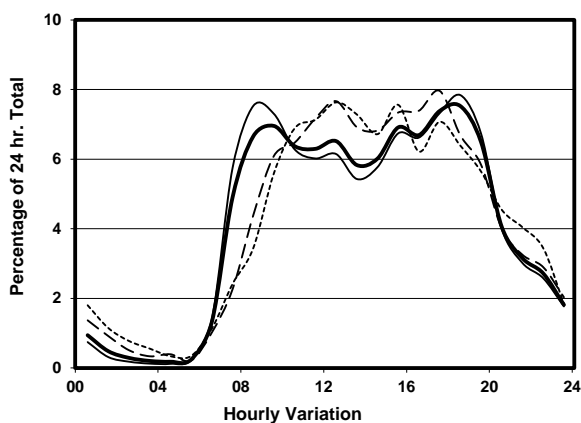
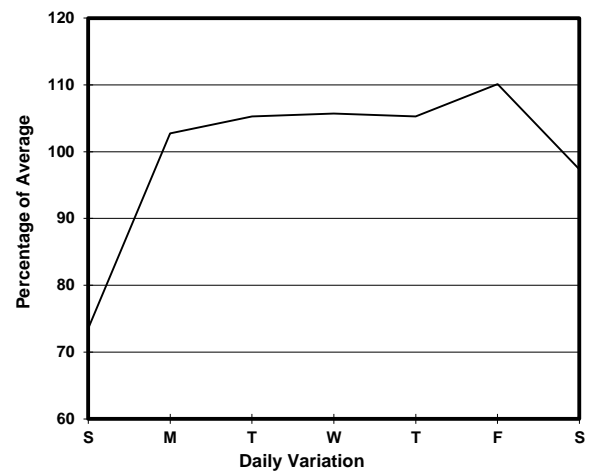
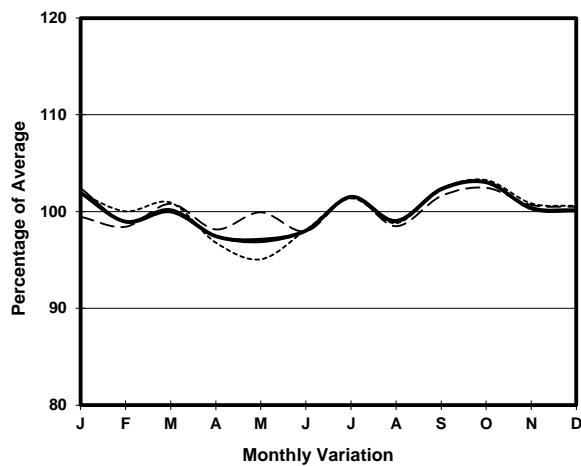
MAJOR

ROAD TYPE

DISTRICT DISTRIBUTOR



1. TRAFFIC FLOW VARIATION AND GROWTH



2. TRAFFIC CHARACTERISTICS (BY DIRECTION)

Parameter

EAST BOUND

A.A.D.T.

R 12 / 24 - %

R 16 / 24 - %

AM Peak Hour

One-way flow at AM peak hour

T - % (AM)

PM Peak Hour

One-way flow at PM peak hour

T - % (PM)

Prop.of commercial vehicles - 16 hr.

All - Day

Mon. - Fri.

Sat.

Sun.

9020

9610

9090

6960

76.5

76.9

76.5

73.8

94

94.6

92.7

91.9

0800-0900

0800-0900

0900-1000

0900-1000

590

710

540

380

-

4.5

-

-

1800-1900

1800-1900

1700-1800

1700-1800

700

790

730

500

-

0.6

-

-

-

1.3

-

-

WEST BOUND

A.A.D.T.

R 12 / 24 - %

R 16 / 24 - %

AM Peak Hour

One-way flow at AM peak hour

T - % (AM)

PM Peak Hour

One-way flow at PM peak hour

T - % (PM)

Prop.of commercial vehicles - 16 hr.

8420

9120

8130

6050

79.8

80.8

78

75

95

95.6

93.7

92.3

0900-1000

0900-1000

0900-1000

0900-1000

630

720

510

350

-

0.6

-

-

1700-1800

1700-1800

1700-1800

1800-1900

630

690

640

430

-

3.7

-

-

-

2.1

-

-

3. OTHER INFORMATION AND COMMENT

4. Vehicle classification and occupancy - Monday to Friday

Time		Class of vehicle									
		Motor Cycle	Private Car	Taxi	Private LB	PLB	Goods veh.		Non Fr. Bus	Fr. Bus	
							Light	M & H		SD	DD
0700-0800	Pro	1.9	46.3	38.8	4.7	3.7	2.3	0.0	2.3	0.0	0.0
	Ocp	1.0	1.5	2.3	5.8	12.1	1.4	0.0	15.4	0.0	0.0
0800-0900	Pro	0.7	62.3	29.2	0.0	1.8	3.2	0.0	2.8	0.0	0.0
	Ocp	1.0	1.5	2.4	0.0	16.4	2.2	0.0	13.1	0.0	0.0
0900-1000	Pro	1.9	59.3	28.8	1.0	1.3	7.1	0.0	0.6	0.0	0.0
	Ocp	1.2	1.5	2.1	1.7	16.8	2.2	0.0	2.0	0.0	0.0
1000-1100	Pro	0.4	65.0	24.0	0.8	1.5	7.2	0.0	1.1	0.0	0.0
	Ocp	1.0	1.5	2.0	3.0	13.0	1.6	0.0	1.3	0.0	0.0
1100-1200	Pro	3.5	57.8	27.1	0.8	0.8	8.9	0.0	1.2	0.0	0.0
	Ocp	1.0	1.5	2.2	2.0	15.5	1.7	0.0	8.7	0.0	0.0
1200-1300	Pro	1.0	68.6	17.9	2.4	1.0	7.4	0.0	1.7	0.0	0.0
	Ocp	1.0	1.5	2.2	7.3	10.7	1.8	0.0	9.4	0.0	0.0
1300-1400	Pro	3.3	62.9	23.0	0.0	1.4	6.6	0.0	2.8	0.0	0.0
	Ocp	1.0	1.5	2.1	0.0	9.3	1.6	0.0	7.0	0.0	0.0
1400-1500	Pro	1.6	54.9	32.5	0.0	1.2	7.7	0.0	2.0	0.0	0.0
	Ocp	1.0	1.5	2.3	0.0	10.7	1.9	0.0	7.0	0.0	0.0
1500-1600	Pro	0.9	62.7	23.5	0.9	1.2	7.1	0.0	3.7	0.0	0.0
	Ocp	1.0	1.4	2.6	7.0	14.0	1.4	0.0	15.4	0.0	0.0
1600-1700	Pro	1.1	61.0	30.7	1.1	1.5	3.0	0.0	1.5	0.0	0.0
	Ocp	1.0	1.6	2.6	6.0	9.0	1.8	0.0	8.5	0.0	0.0
1700-1800	Pro	1.0	69.5	23.8	0.0	2.0	1.7	0.0	2.0	0.0	0.0
	Ocp	1.0	1.7	3.0	0.0	9.3	1.0	0.0	10.2	0.0	0.0
1800-1900 Peak hour	Pro	1.0	60.0	33.4	0.7	1.0	2.6	0.0	1.3	0.0	0.0
	Ocp	1.0	1.8	2.4	2.5	15.3	1.4	0.0	17.0	0.0	0.0
1900-2000	Pro	1.3	67.1	27.0	0.6	1.6	1.6	0.0	0.9	0.0	0.0
	Ocp	1.3	1.4	2.1	2.0	14.4	1.6	0.0	5.7	0.0	0.0
2000-2100	Pro	1.4	58.7	36.5	0.0	1.9	0.5	0.0	1.0	0.0	0.0
	Ocp	1.0	1.5	2.1	0.0	13.0	1.0	0.0	15.0	0.0	0.0
2100-2200	Pro	2.6	46.1	47.8	0.0	2.6	0.9	0.0	0.0	0.0	0.0
	Ocp	1.0	1.9	1.6	0.0	6.7	2.0	0.0	0.0	0.0	0.0
2200-2300	Pro	0.8	63.6	30.5	0.8	3.4	0.8	0.0	0.0	0.0	0.0
	Ocp	1.0	1.7	2.2	3.0	11.0	1.0	0.0	0.0	0.0	0.0
16 hours	Pro	1.5	61.2	28.6	0.9	1.6	4.6	0.0	1.7	0.0	0.0
	Ocp	1.0	1.6	2.3	5.0	12.4	1.7	0.0	10.8	0.0	0.0

Legend

Pro. Proportion of vehicles in % (Sum may not add up to 100% due to figure rounding)
Ocp. Average occupancy of vehicles
M&H Medium and Heavy